

# Accent XL™

## The Benefits of Accent XL

### Dual RF Modules – ONLY system with this combination

- **Unipolar Module** for deep, volumetric radiofrequency heating
- **Bipolar Module** for superficial radiofrequency heating

### Upgradeable – Expand as your practice grows

- 6 different modules available
- Cost effective upgrade – no need for a separate system
- Customizable – choose the modules you want

### Long lasting results – Only a few quick treatments

- Visible progress with each session
- High patient satisfaction

### Quick, easy to perform treatments

- Ergonomic handpiece design
- User friendly interface
- High patient through-put

### Comfortable treatments

- Virtually painless
- Contact cooling
- No need for anesthesia

### Simple, easy and cost-effective procedure

- No disposables
- No grounding pad
- No special electrical requirements
- High system reliability



### Technical Specifications\*

Maximum RF Output - Unipolar Handpiece	300 W (+/- 3%)
Maximum RF Output – Bipolar Handpiece	160 W (+/- 3%)
Maximum RF Output – UniLarge Handpiece	330 W (+/- 3%)
Maximum RF Output – Pixel RF Handpiece	150 W (+/- 3%)
Maximum RF Output – Medical RF Handpiece	140 W (+/- 3%)
Maximum RF Output – Plasma Handpiece	90 W (+/- 3%)
Gas used with Plasma Handpiece	Helium + CO <sub>2</sub>
	Helium + Nitrogen
Output Frequency	40.68 MHz (+/- 5 Hz)
Electrical	100-120 VAC / 208-240 VAC
	5A, 50-60 Hz
Cooling	Contact Cooling
Weight	110 lbs. (50 kg.)
Dimensions	17" x 21" x 38" (44 x 54 x 97 cm)

\*Patent pending

The Accent XL system is marketed under the name Tenor in Asia Pacific.  
The Plasma, Pixel and Medical RF modules are not yet CE marked.

[www.almalasers.com](http://www.almalasers.com)

**Alma Lasers®**  
Wellbeing Through Technology



**CE 0473**

©2007, Alma Lasers, Ltd. All rights reserved. Alma Lasers Ltd., its logo, Accent®, Accent XL™, Tenor™, Aria™, Harmony™, Sonata™, Soprano®, DualChil™, and BlendMode™ are the trademarks of Alma Lasers, Ltd. Product specifications are subject to change without notice.

**United States**  
485 Half Day Road  
Suite # 100  
Buffalo Grove, IL 60089  
Tel: (224) 377-2000  
Fax: (224) 377-2050

**Headquarters**  
Halamish St., P.O.B 3021  
Caesarea Industrial Park  
Caesarea, Israel 38900  
Tel: +972-4-627-5357  
Fax: +972-4-627-5368

PBAP2501 0701 Rev.2

**Alma Lasers®**  
Wellbeing Through Technology

Accent XL™

## Redefine Yourself with ThermoShape Radiofrequency Technology

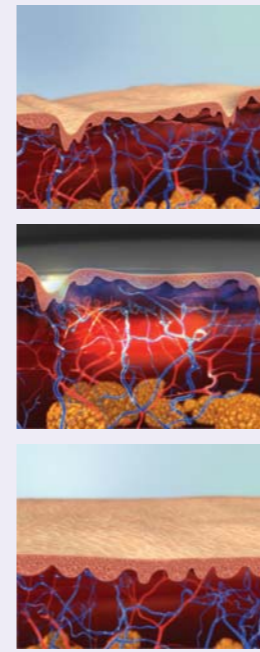
Accent XL is the only system on the market which provides two types of radiofrequency heating technologies – Unipolar and Bipolar. The Unipolar module is a proprietary technology developed to deliver RF energy at a controllable depth into the tissue for volumetric heating. This volumetric heating is used for body shaping and cellulite treatment. Complementing this, the Bipolar module delivers RF energy more superficially to provide a gentle heat for smoothing fine lines and wrinkles.

**Accent XL is an upgradeable platform.**

- The NEW UniLarge RF module enhances treatment capabilities by enabling faster treatments. This feature is particularly important for the Unipolar RF, since this technology is used mainly for deeper treatments on larger areas.
- The NEW Pixel RF module is a novel technology for skin rejuvenation, enabled by combining RF technology with Pixel fractional skin resurfacing capabilities. Three different sized Pixel tips allow easy treatment of all types of body areas.
- The NEW Medical RF module was developed to treat a pervasive condition for which there is no truly satisfactory solution – nail fungus. By providing deep heating to the nail bed, the fungus is heated to the thermal damage point and eliminated.
- The NEW Plasma module is an attractive add-on option for treating acne, psoriasis and skin rejuvenation. A novel technology, Plasma uses an excited gas to provide an effective gentle treatment. Depending on the application, there are several choices – a mixture of helium and nitrogen gases are used for skin rejuvenation, and a mixture of CO<sub>2</sub> and helium are used for acne and psoriasis treatments.

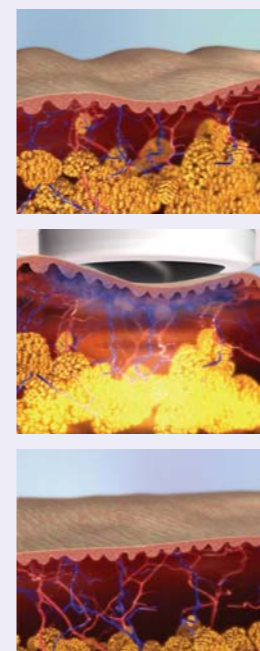
**Accent XL radiofrequency treatments can create significant change without invasive surgery or even topical anesthetics.** An added benefit is that Accent XL enables no downtime therapy. Complete with contact cooling, the Accent XL handpieces enable the radiofrequency energy to be delivered to the tissue while it is being continuously cooled. This provides additional patient comfort and epidermal protection.

### Collagen



The Bipolar handpiece generates heat within the dermis. This dermal heating releases the collagen bonds and unwinds the collagen bundles. Fibroblasts are released to the surrounding area, stimulating the growth of new collagen. The result - a thickening of the dermal layer and improvement in skin surface texture over time.

### Cellulite



Deep dermal heating applied to the dermis with the Unipolar handpiece increases localized metabolism and blood circulation. Triglycerides and free fatty acids trapped within the adipocytes are released into the bloodstream, causing shrinkage of these cells.

The result - reduction in the size of the adipocytes in the hypodermis, improved quality and integrity of the connective tissue, and reduction in cellulite.

## Accent Your Potential with Accent XL™

### Accent XL Radiofrequency Platform

- Modular platform
  - **Bipolar RF** module for skin tightening (superficial heating)
  - **Unipolar RF** module for body reshaping and cellulite treatment (deeper heating)
  - **UniLarge RF module** for even faster treatments
  - **Pixel RF module** for skin rejuvenation
  - **Plasma RF module** for acne, skin rejuvenation and psoriasis
  - **Medical RF module** for nail fungus
- Upgradeable and customizable
- Long lasting results
- Fast and virtually painless
- Non-invasive and non-ablative
- No downtime
- No consumables

### Accent XL applications include:

- Acne
- Acne scars
- Acne-type rosacea
- Body reshaping
- Cellulite
- Nail fungus
- Pores
- Post-liposuction
- Psoriasis
- Skin rejuvenation
- Skin tightening
- Volumetric dermal therapy
- Wrinkle treatment



Before



4 Weeks After 8 Treatments



Before



2 Months After 3 Treatments

Photos Courtesy: David J. Friedman, MD, Jerusalem, Israel

Bipolar RF

Unipolar RF

UniLarge RF

Pixel RF

Plasma RF

Medical RF